



# Operations Manual

STORM 1

STORM 2

Storm 1 with Hose Reel

Storm 2 with Hose reel

Storm Wall Mounted 1

Storm Wall Mounted 4

## Declaration of Conformity (E.H.S.R)

**We, Demon International Limited of Abbots Close, Lee Mill Industrial Estate, Ivybridge, Devon, PL21 9GA Declare this machine must be operated in accordance with the operation and safety instructions as supplied with this machine. This machine is manufactured in accordance with the following standards.**

<b>Machine Type</b>	
<b>Serial Number</b>	
<b>Voltage</b>	
<b>Working Pressure</b>	
<b>Date of Supply</b>	



# Technical Specifications

## Storm 1

Pump	ARXT 11.14	Motor	MTR00100
Pump pressure	100 bar	1500psi	Motor output P1 2.2KW
Flow rate	11 lpm	2.45gpm	Motor input P2 3.0KW
Max by pass setting	120 bar	1750psi	Max current 12.5 amps
H.P Nozzle	2504	Voltage	230V + or - 10V
Pump oil	10W40	Insulation	Class F
Unloader valve (No Hose Reel)	ARMM4B/C	Duty cycle	100%
Unloader valve (Hose Reel)	ARGM3	Protection	IP54
Noise			

## Storm 2

Pump	XT 11.14	Motor	MTR00301
Pump pressure	100 bar	1200psi	Motor output P1 2.2KW
Flow rate	11 lpm	2.45gpm	Motor input P2 3.0KW
Max by pass setting	120 bar	1750psi	Max current 24 amps
H.P Nozzle	2504	Voltage	110v + or - 5V
Pump oil	10W40	Insulation	Class F
Unloader valve	ARMM4B/C	Duty cycle	100%
Noise		Protection	IP54

## Storm Wall Mounted 1

Pump	XT 11.14	Motor	MTR00100
Pump pressure	100bar	1500psi	Motor Output P1 2.2W
Flow rate	11 1pm	2.45gpm	Motor Input P2 3.0KW
Max by pass setting	120 bar	Max current	12.5amps
H.P. Nozzle	2504	Voltage	230V + or - 10V
Pump Oil	10W/40	Insulation	Class F
Unloader valve (No Hose Reel)	ARMM4B/C	Duty cycle	100%
Unloader valve (Hose Reel)	ARGM3	Protection	IP54

## Storm Wall Mounted 4

Pump	RK15.20		Motor	MTR00220
Pump pressure	200bar	2900psi	Motor Output	P1 5.5W
Flow rate	15 lpm	3.3gpm	Motor Input	P2 6.6KW
Max by pass setting	210 bar		Max current	12.6 amps phase
H.P. Nozzle	2504		Voltage	415V + or - 10V
Pump Oil	10W/40		Insulation	Class F
Old Unloader valve	ARMM4B/TSS			
New Unloader valve	ARGM3		Duty Cycle	100%
Noise				

## Storm Twin Cabinet 1

Pump	ARXT 11.14		Motor	MTR00100
Pump pressure	100 bar	1500psi	Motor output	P1 2.2KW
Flow rate	11 lpm	2.45gpm	Motor input	P2 3.0KW
Max by pass setting	120 bar	1750psi	Max current	12.5 amps
H.P Nozzle	2504		Voltage	230V + or - 10V
Pump oil	10W40		Insulation	Class F
Unloader valve	ARGM3		Duty cycle	100%
Noise			Protection	IP54

## Storm Twin Cabinet 4

Pump	RK15.20	Motor	MTR00220
Pump pressure	200bar	2900psi	Motor Output P1 5.5W
Flow rate	15 lpm	3.3gpm	Motor Input P2 6.6KW
Max by pass setting	210 bar	Max current	12.6 amps phase
H.P. Nozzle 10V	2504	Voltage	415V + or -
Pump Oil	10W/40	Insulation	Class F
New Unloader valve	ARGM3	Duty Cycle	100%
Noise		Protection	IP54

	Valve Kit	Piston Kit	Oil Seal Kit	Water Seal Kit	MINIMATIC REPAIR KIT
<b>STORM 1</b>	<b>1864</b>	<b>2629</b>	<b>1872</b>	<b>1874</b>	<b>2812</b>
<b>STORM 2</b>	<b>1864</b>	<b>2629</b>	<b>1872</b>	<b>1874</b>	<b>2812</b>
<b>WM 1</b>	<b>1864</b>	<b>2629</b>	<b>1872</b>	<b>1857</b>	<b>2223</b>
<b>WM4</b>	<b>1828</b>	<b>2757</b>	<b>1856</b>	<b>1857</b>	<b>2223</b>
<b>Storm Twin Cabinet</b>	<b>1864</b>	<b>2629</b>	<b>1872</b>	<b>1874</b>	<b>2223</b>



# Preparation

**NOTE: ONLY CLEAN FILTERED WATER SHOULD BE USED.**

## **Hoses:**

- a. Attach the high pressure hose to the pump connection.

## **OPERATION**

(Check that electric motor is switched '**OFF**')

- a. Plug into a suitable electrical source. (Not an extension lead)
- d. Switch '**ON**' electric motor.
- e. Open regulator nozzle slightly and direct lance on surface to be cleaned. Press operating trigger.
- f. Adjust pressure regulator as required to obtain working pressure.
- g. **NOTE:** The high pressure water will cause the gun to 'kick'. Make sure you have a firm grip of the gun and lance.



# Operation Hints

- a. During very cold weather it is most important to protect the machine against freezing. DO NOT operate machine should it become frozen.
- b. Check all hoses and couplings for leaks, tighten where

## **WHEN USING CLEANING AGENTS**

- a. Set machine up for water only.
- b. Connect detergent hose to machine and place filter end into detergent reservoir. Unscrew the adjustable nozzle on the end of the lance to reduce the pressure to 500psi. The chemical will now be automatically injected into the water.
- c. On completion of work, flush through hose and gun with clean water to remove any residual detergent.

## **SERVICING**

The Storm range require little maintenance apart from checking the oil level at least every week and changing the oil should it turn white or it is six months old. If the oil turns white it is due only to water entering the pump via the dipstick, which has a breather hole drilled through. The design of the pump does not allow water from the pump to gain access to the gearbox drive.



# Operation Instructions

## SAFETY

- i. **A Residual Current Device (R.C.D.) or Earth Leakage Trip** must be used with this machine.
  
- ii. **Water at high pressure is dangerous and can cause serious injury. This machine is to be used with great caution.**
  - a. **NEVER** point the high pressure spray jet at any person, animal, glass or any other material which may shatter.
  
  - b. **PREVENT** any over-spray from injuring other people or damaging property.
  
  - c. **DO NOT** even try to use a pressure washer on machinery or electrical
  
  - f. **DO NOT** use a high pressure hose from a ladder. Use a platform tower or proper scaffolding.
  
  - g. **CHECK** that your supply voltage agrees with that shown on the machine.
  
  - h. Demon do not recommend the use of an extension lead using an extension lead will result in switch failure or motor damage. Demon strongly recommend the use of extension hoses as opposed to extension leads. Warranty claims for damaged switches and motors used on extension leads will not be allowed. Ask the service department if in doubt.



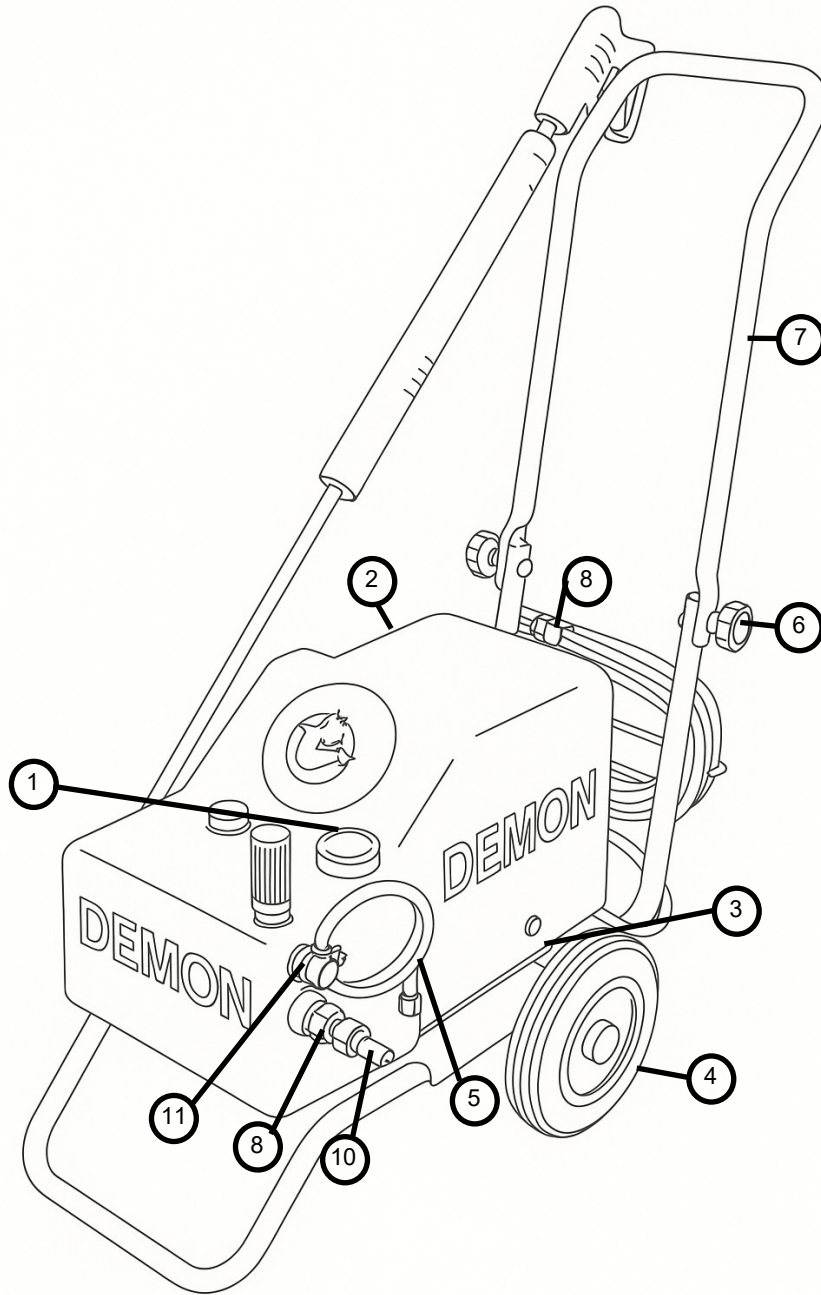
# Fault Finder

FAULT	CAUSE	REMEDY
Machine stops suddenly Or will not start.	Blown fuse.	Check mains power supply, replace fuse. Wait until unit cools down before resetting switch.
Sudden pressure loss.	Water supply	Check water supply.
Low pressure	HP nozzle worn or unloader set	Replace HP nozzle. Set unloader to correct setting.
Low pressure with noise and vibration.	Valves worn or blocked. Piston seals worn. Pump sucking air.	Clean/replace as required. Replace. Check water supply pipe and unions.
Pump will not by-pass.	Non return valve dirty or jammed.	Clean or replace.
Water drips from pump box.	Pump seals worn.	Replace.
Oil drips from pump	Oil seal worn.	Replace.
Oil is milky in colour.	Water ingress through oil filter plug.	Rinse pump out and replace oil.

**IF IN DOUBT ASK—OUR ADVICE IS FREE AND CAN SAVE**



# Storm General Arrangement



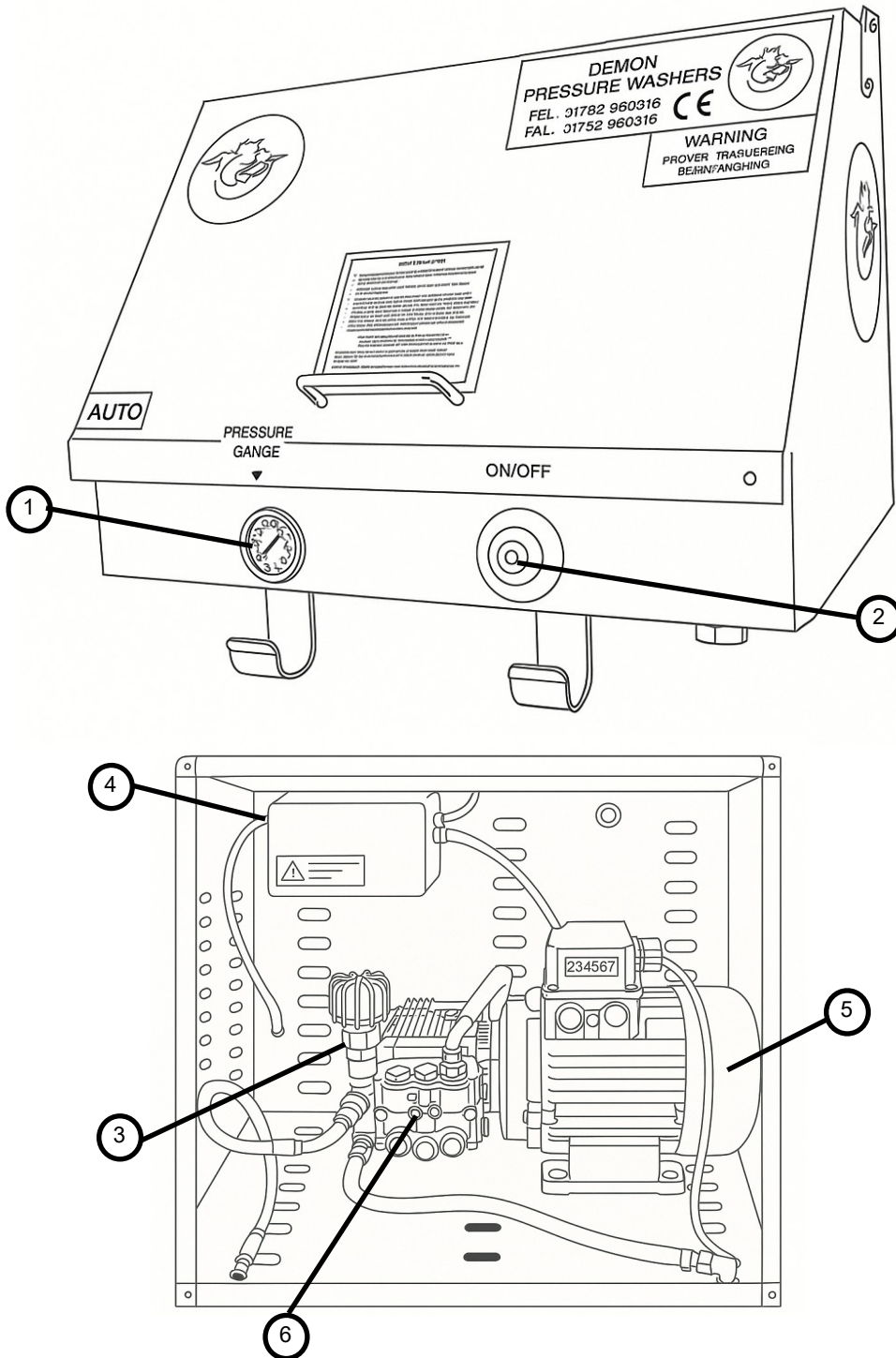
1	Pressure Gauge	DEM20620	7	Frame Handle	DEM10226
2	Cover	DEM20181	8	13amp Plug	DEM10180
3	Rubber Mounts	DEM10375	9	Female Inlet	MTM73001
4	Wheel	WHEEL200	10	Male Inlet	MTM73020
5	Detergent Pipe	DEM10115	11	Female Outlet	MTM70013
6	Handle Knob	DEM10225	12	Capacitor 65mf	DEM10139



# Storm Hose Reel General Arrangement



# Storm Wall Mount General Arrangement

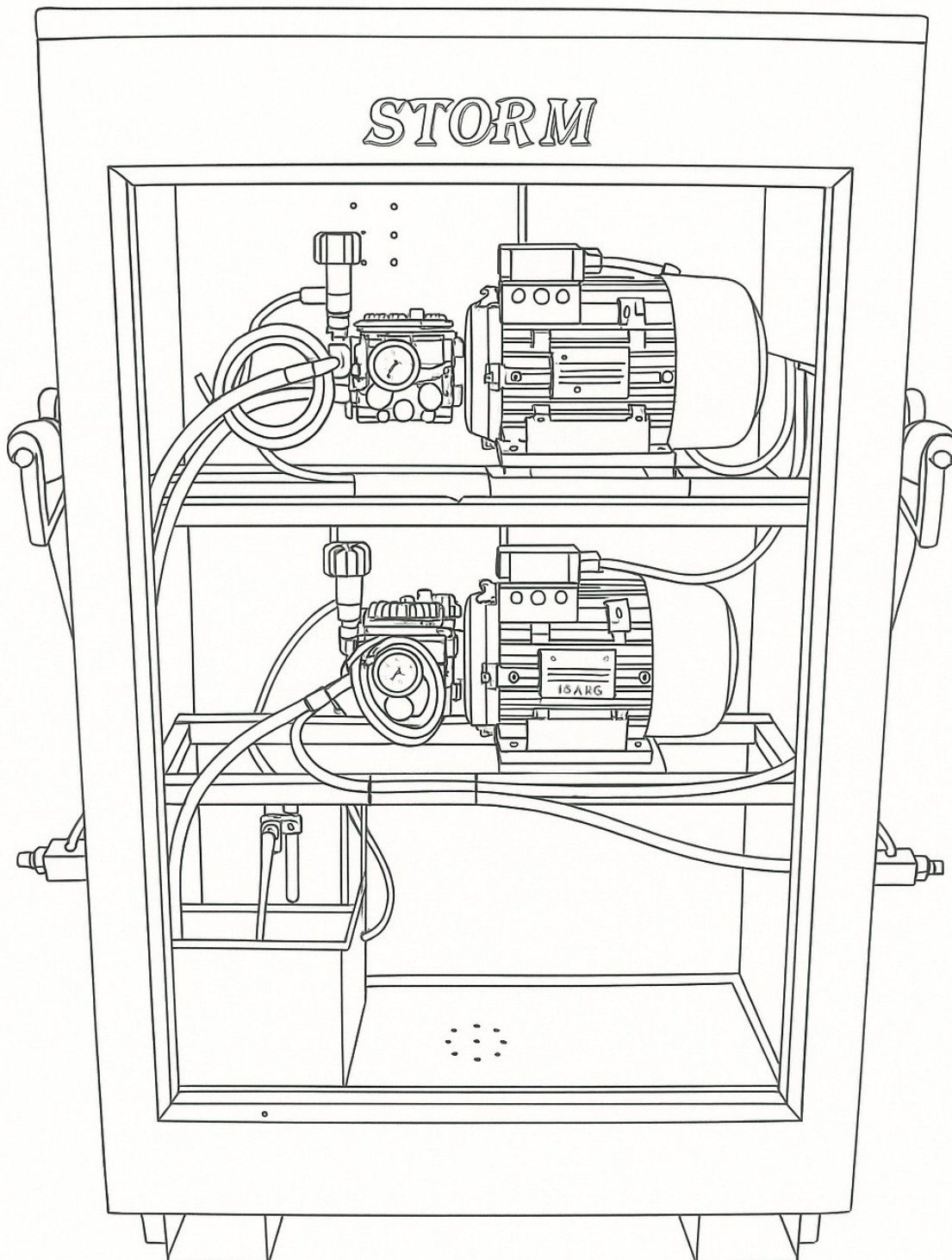


1	Pressure Gauge	DEM20620	4	Electrics Box	DEM101111
2	Cold Water Button	H6442B	5	Motor	MTR00100
3	Unloader Valve	ARMM4B/CTSS	6	Pump	ARXT11-14



# Storm Twin

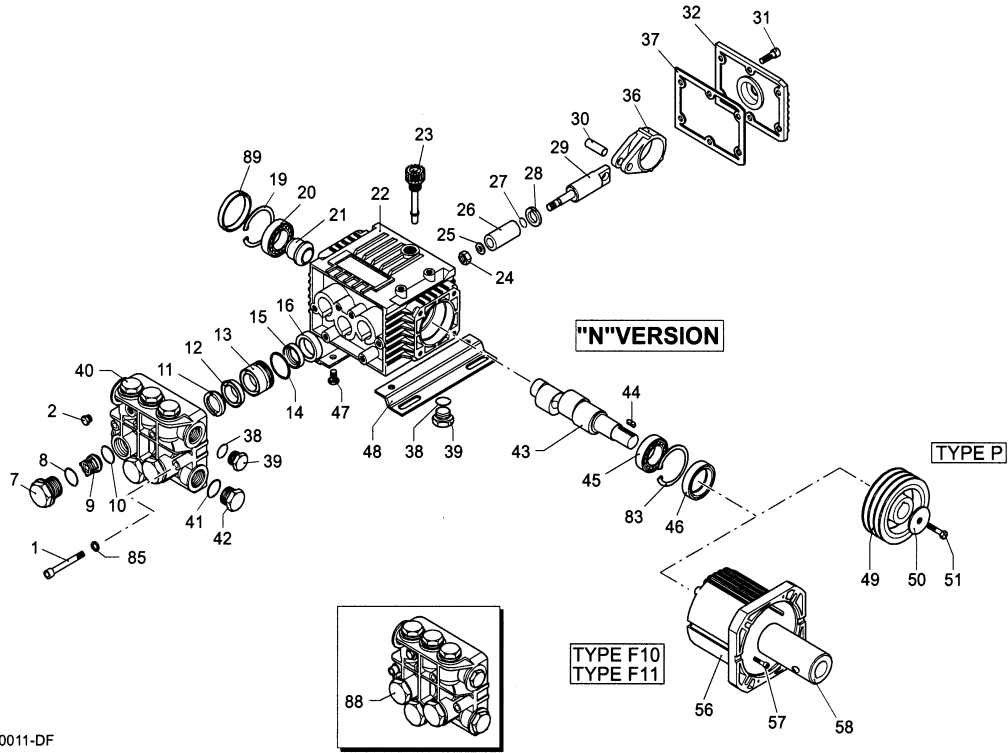
## General Arrangement



# Pump XT 11.14 for Storm 1 & 2 and Storm Wall mounted/Twin Cabinet 1

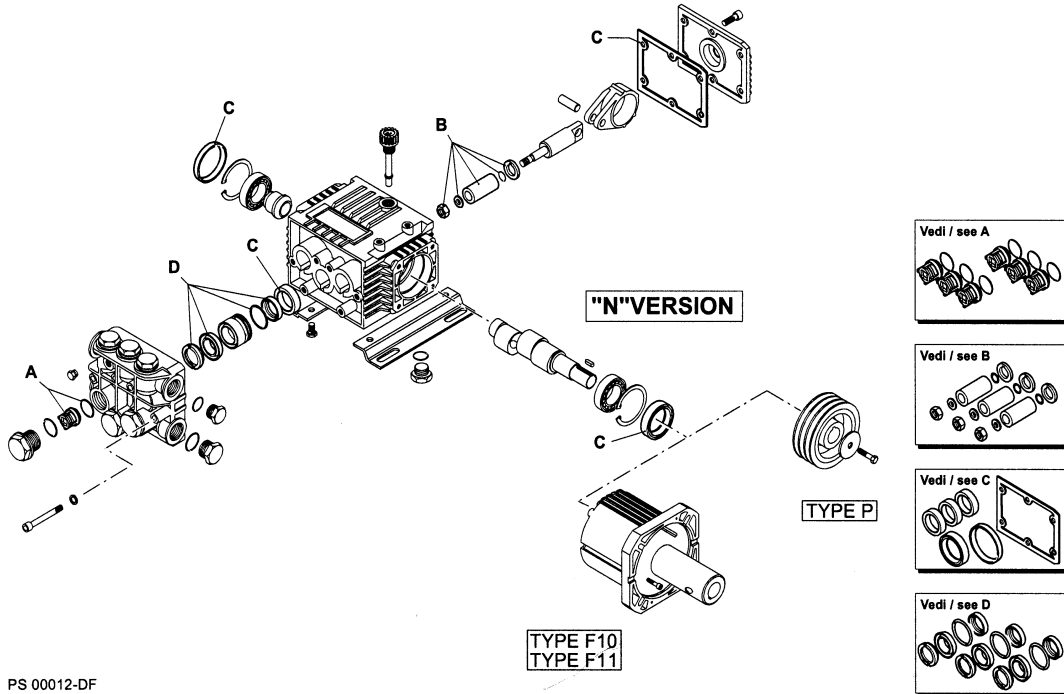
# XT

VERSION **N** 1450 RPM



PS 00011-DF

## KIT RICAMBI / PART KITS



PS 00012-DF

## Pump XT 11.14 for Storm 1 & 2 and Storm Wallmount- ed/Twin Cabinet 1

XT 1450							
Pos	Code No	Description	Qty	Pos	Code No	Description	Qty
1	AR680570	Screw	6	40	AR1320020	Pump Head	1
2	AR620301	Plug	1	41	AR180101	O Ring	1
7	AR1260162	Plug	6	42	AR820361	Plug	1
8	AR960160	O Ring	6	43	AR1260200	Crankshaft	1
9	AR1269050	Complete	6	43	AR132026	Crankshaft	1
10	AR880830	O Ring	6	44	AR1380520	Key	1
11	AR1320340	Support Ring	3	45	AR132037	Bearing	1
12	AR1260220	Gasket	3	46	AR126075	Seal	1
13	AR1320351	Piston Guide	3	47	AR126047	Screw	4
14	AR1260420	O Ring	3	48	AR126389	Base	2
15	AR1260450	Gasket	3	83	AR126079	Circlip	1
16	AR1260460	Seal	3	85	AR138155	Washer	6
19	AR1260790	Circlip	1	88	AR126922	Pump Head pre-ass	1
20	AR1320370	Bearing	1	89	AR126674	Cap	1
21	AR1320330	Bushing	1				
22	AR1320010	Pump Hous-	1				
23	AR880130	Oil Plug	1				
24	AR1260110	Nut	3				
25	AR1260100	Washer	3				
26	AR1260210	Piston	3				
27	AR480480	O Ring	3				
28	AR1260091	Spacer	3				
29	AR1260070	Guiding Pis-	3				
30	AR1260080	Piston Pin	3				
31	AR1260760	Screw	6				
32	AR1269101	Complete	1				
32	AR1320910	Complete	1				
36	AR1260060	Con Road	3				
36	AR1320140	Con Road	3				
37	AR1260040	Gasket	1				
38	AR740290	O Ring	2				
39	AR1980740	Plug	2				

ARKIT1874	
Water Seals	
11	3
12	3
14	3
15	3

ARKIT1864		ARKIT2629		ARKIT1872	
Valve Kit		Piston Kit		Oil Seal Kit	
Pos	Qty	Pos	Qty	Pos	Qty
9	6	24	3	16	3
10	6	25	3	37	1
		26	3	46	1
		27	3	89	1
		28	3		

# Pump RK 15.20 for Storm Wallmounted/Twin Cabinet 4

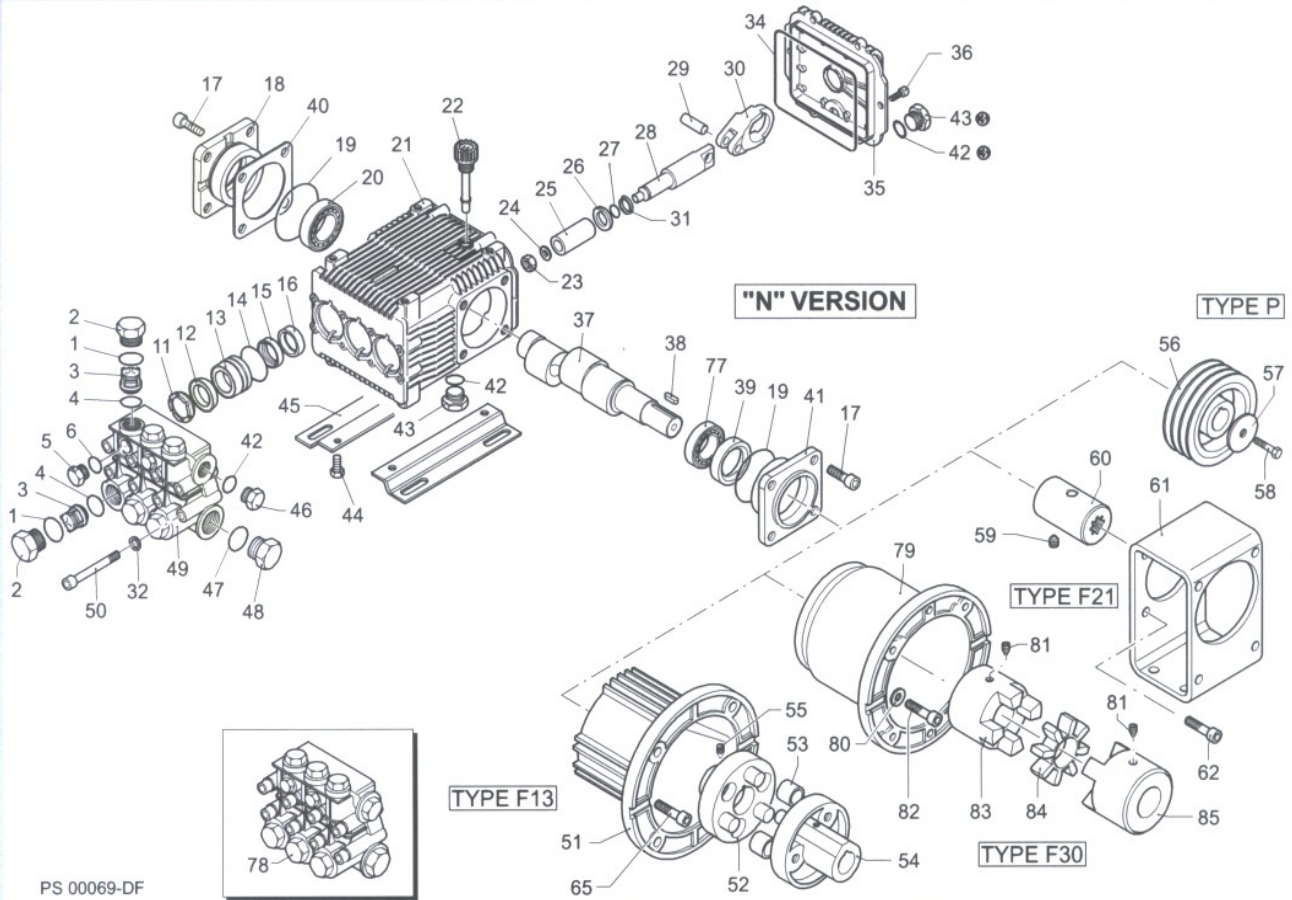
# RK

VERSION

# N

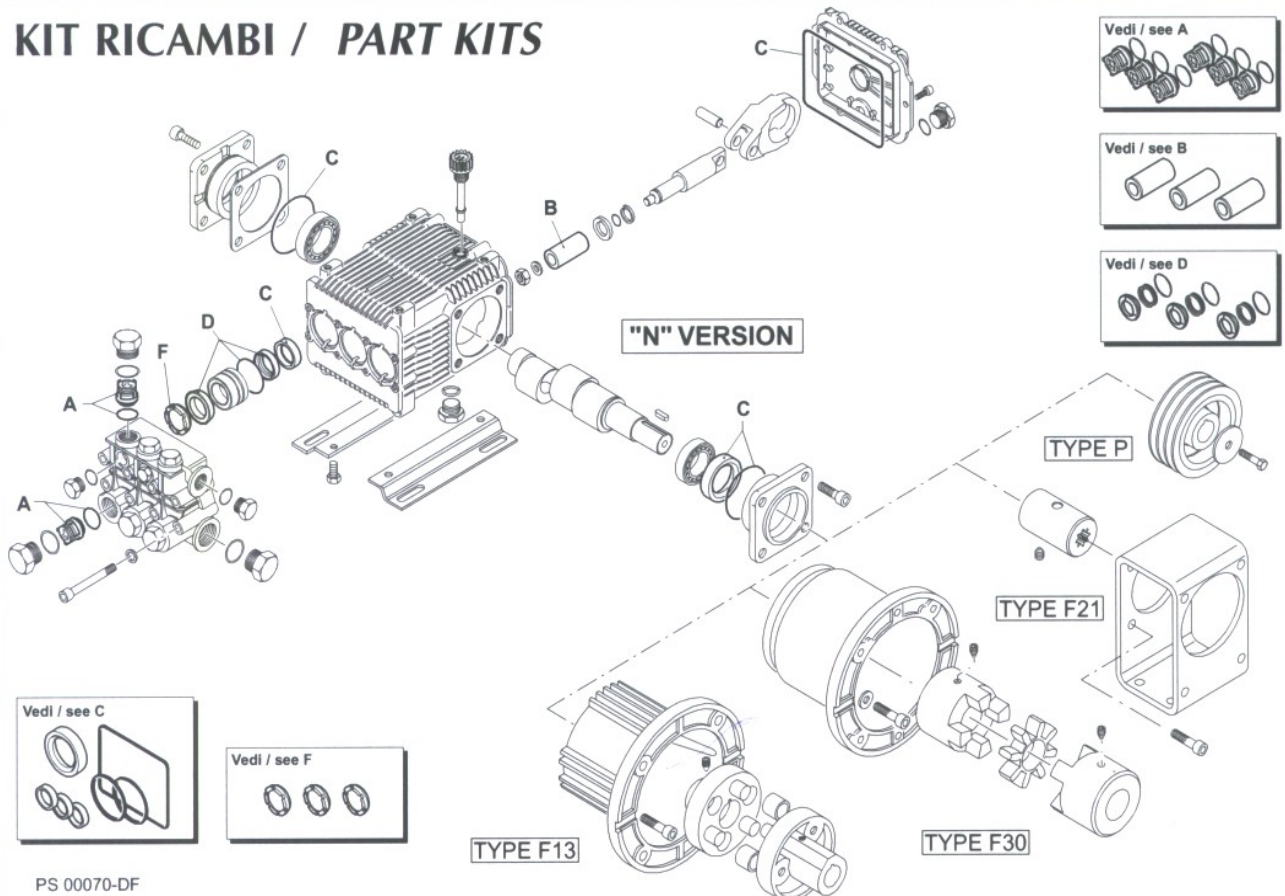
# 1450

RPM



PS 00069-DF

## KIT RICAMBI / PART KITS



PS 00070-DF

## Pump RK 15.20 for Storm Wall mounted/Twin Cabinet 4

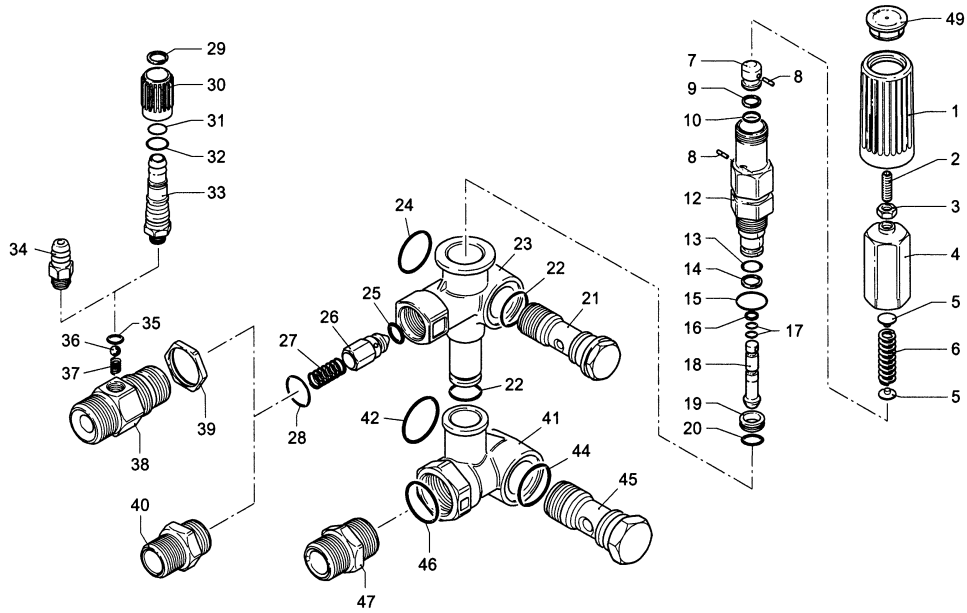
Pos	Part No	Description	Qty	Pos	Part No	Description	Qty
1	AR960160	O Ring	6	36	AR1343510	Screw	6
2	AR960090	Plug	6	40	AR1380120	0.10mm shim	1÷3
2	AR1380740	Plug	6	40	AR1380130	0.20mm shim	1÷3
3	AR1389051	Complete Valve	6	40	AR1380530	0.25mm shim	1÷3
4	AR880830	O Ring	6	40	AR1382810	0.05mm shim	1÷3
5	AR880581	Plug	2	42	AR740290	O ring	3
6	AR820510	O Ring	2	43	AR1980740	<sup>3</sup> / <sub>8</sub> G plug	2
11	AR960110	Support Ring	3	44	AR1260470	Screw	4
12	AR880320	Gasket	3	45	AR1380141	Base	2
13	AR1380090	Piston Guide	3	46	AR1980740	<sup>3</sup> / <sub>8</sub> G Plug	1
14	AR961240	O Ring	3	46	AR1981180	<sup>3</sup> / <sub>8</sub> G Plug	1
15	AR880330	Gasket	3	47	AR180101	O Ring	1
16	AR138130	Seal	3	48	AR820361	Plug	1
17	AR850370	Screw	8	48	AR960870	Plug	1
18	AR1380050	Closed Bearing sup	1	78	AR1389272	Pump head complete	1
19	AR640030	O Ring	1	50	AR820150	Screw	8
20	AR2280240	Bearing	1	60	AR1380320	Bearing	1
21	AR1382770	Pump Housing	1	61	AR621170	Seal	1
22	AR880130	Oil Cap	1	62	AR1380220	O Ring	1
23	AR962010	Nut	3	63	AR1380210	Shaft cover	1
24	AR962000	Washer	3	66	AR2280180	Hollow Shaft 28mm	1
24	AR1380940	Ceramic Piston	3	66	AR2280170	Hollow Shaft 028mm	1
26	AR1380950	Spacer	3	66	AR2280160	Hollow Shaft 028mm	1
27	AR600180	O ring	3	66	AR2280150	Hollow Shaft 028mm	1
28	AR1380920	Guiding Piston	3	67	AR1380370	El Motor flange	1
29	AR1380060	Piston Pin	3	76	AR620610	Screw	4
30	AR1383050	Aluminium con-rod	3	78	AR1389272	Pump head Ass	1
31	AR1080401	Ring	3	86	AR1260250	Oil Indicator	1
32	AR1381850	Washer	8	87	AR1260430	Snap Ring	1
34	AR1780510	O Ring	1	88	AR1780690	Disc	1
35	AR1789010	Complete cover	1	89	AR1140450	O Ring	1

Valve Kit		Piston Kit		Oil Seal Kit	
ARKIT1828		ARKIT2757		ARKIT1856	
Pos	Qty	Pos	Qty	Pos	Qty
3	6	25	3	16	3
4	6			19	1
				34	1
				61	1
				62	1

Water Seal		Support Ring	
ARKIT1857		ARKIT1829	
Pos	Qty	Pos	Qty
12	3	11	3
14	3		
15	3		

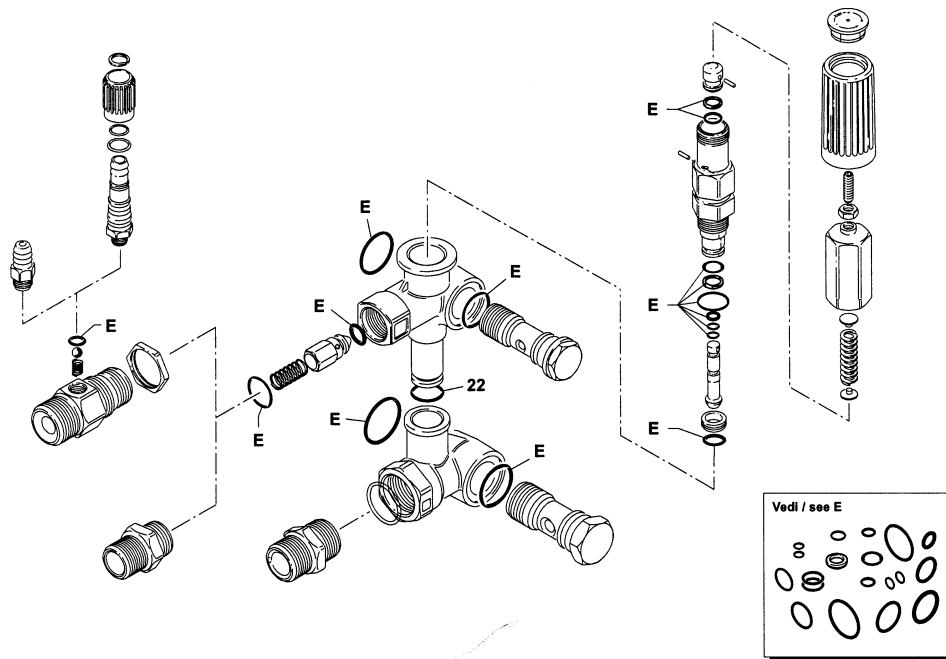
# Unloader for Storm 1 & 2 without Hose Reel

## MINIMATIC 4/B



UN000186-HF

### KIT RICAMBI / PART KITS



UN000187-HF

## Unloader for Storm 1 & 2 without Hose Reel

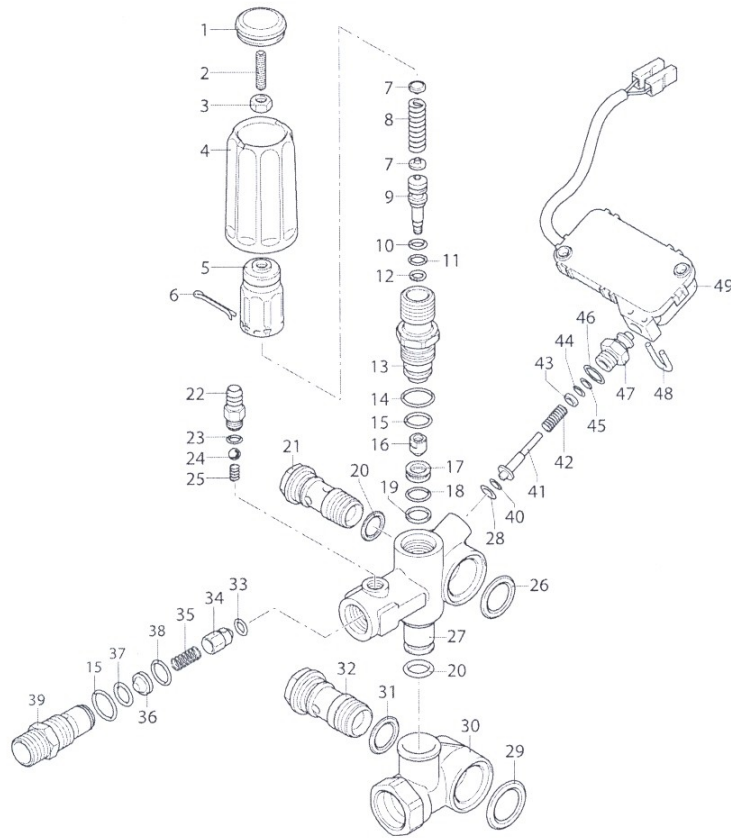
MINIMATIC 4/B							
Pos	Part No	Description	Qty	Pos	Part No	Description	Qty
1	AR1981780	Handle	1	40	AR1540180	Adaptor <sup>3</sup> / <sub>8</sub> G	1
2	AR1540560	Grub	1	40	AR1540500	Adaptor <sup>3</sup> / <sub>8</sub> NPT	1
3	AR1980300	Nut	1	41	AR1540280	By pass hous- ing	1
4	AR1980390	Knob Insert	1	41	AR1540480	By pass hous- ing	1
5	AR1980220	Spring Plate	2	42	AR1540630	O Ring	1
6	AR1271070	Spring	1	44	AR880270	O Ring	1
7	AR1080041	Upper Piston	1	45	AR1540260	Thread Screw	1
8	AR1080070	Pin	2	46	AR480440	O Ring	1
9	AR1080401	Back up Pin	1	47	AR1540050	Fitting	1
10	AR1080250	O ring	1	49	AR1981770	Knob Plug	1
12	AR1980210	Piston Guide	1				
13	AR740290	O Ring	1				
14	AR800560	O Ring	1				
15	AR880830	O Ring	1				
16	AR1271170	Back up Ring	1				
17	AR1080190	O Ring	2				
18	AR1271160	Lower Piston	1				
19	AR1980200	Valve Seat	1				
20	AR1470210	O Ring	1				
21	AR1540270	Thread Screw	1				
21	AR1540430	Thread Screw	1				
22	AR390080	O Ring	2				
23	AR1540510	Valve housing	1				
24	AR1140450	O Ring	1				
25	AR1460430	O Ring	1				
26	AR1540170	Jet	1				
27	AR1080091	Spring	1				
28	AR394280	O Ring	1				
29	AR1560660	Ring	1				
30	AR1560680	Detergent Reg Knob	1				
31	AR480560	O Ring	1				
32	AR800560	O Ring	1				
33	AR1560650	Hose tail	1				
34	AR1560490	Hose tail	1				
35	AR480480	O Ring	1				
36	AR1250280	Ball	1				
37	AR1560520	Spring	1				
38	AR1540580	Fitting <sup>3</sup> / <sub>8</sub> /G	1				
39	AR1540300	Nut	1				

ARKIT 2812					
Pos	Qty	Pos	Qty	Pos	Qty
9	1	17	2	35	1
10	1	20	1	42	1
13	1	22	2	44	1
14	1	24	1		
15	1	25	1		
16	1	28	1		

# Unloader for Storm with Hose Reel & Storm Wallmount- ed/Twin Cabinet 1

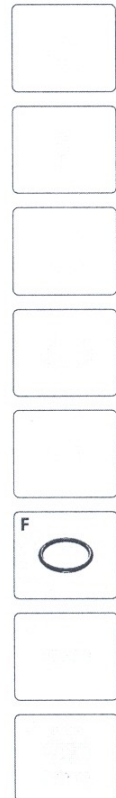
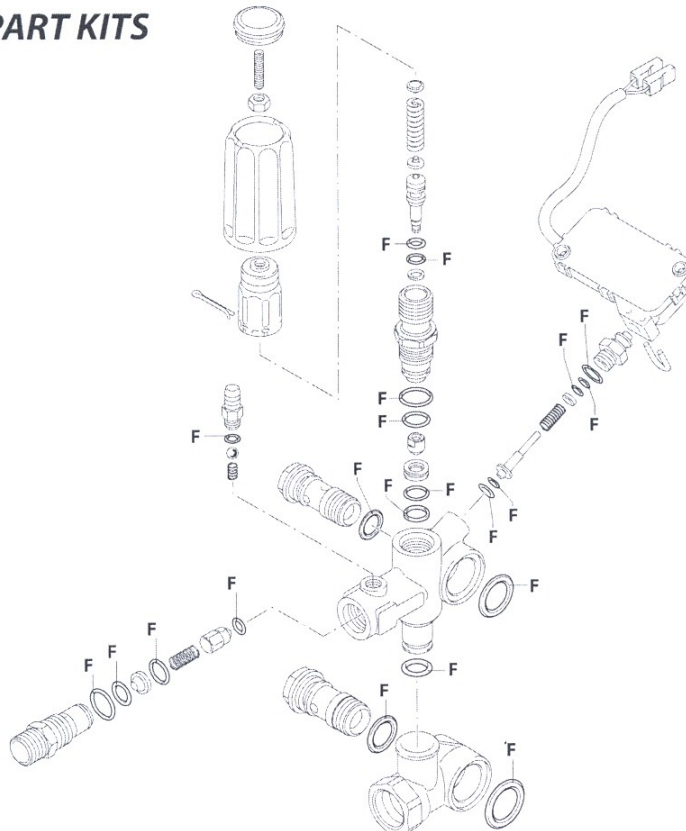
## VRZ TSS + ID

200 bar



UN003611-AS

### KIT RICAMBI / PART KITS



(3748600)

UN003612-AS

341

sp\_40005\_VRZ\_TSS

# Unloader for Storm with Hose Reel & Storm Wallmount- ed/Twin Cabinet 1

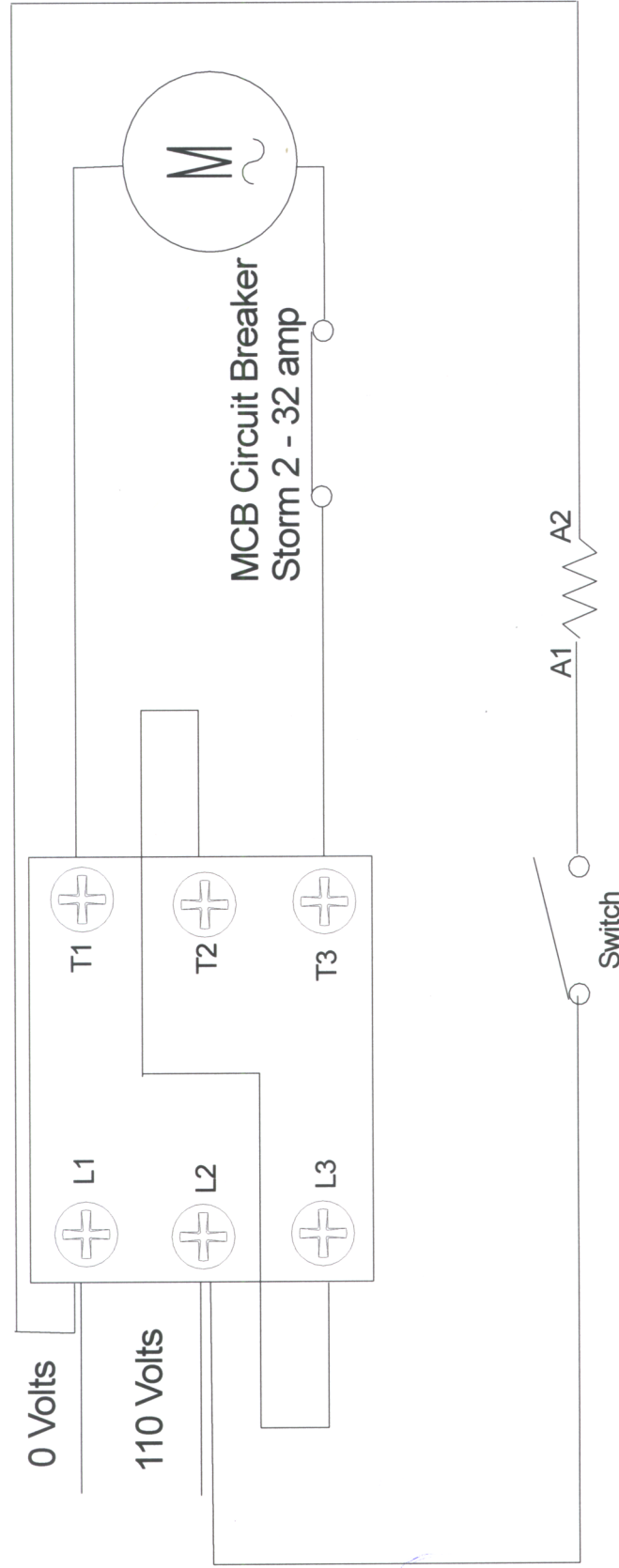
## VRZ TSS

POS	Part No	Description	Qty	Pos	Part No	Description	Qty
1	AR3200500	Plug	1	40	AR2260480	Ring	1
2	AR2840970	Screw	1	41	AR2260470	Pin	1
3	AR1060120	Nut	1	42	AR2260460	Spring	1
4	AR3740030	Knob	1	43	AR2021650	Washer	1
5	AR2500540	Insert	1	44	AR1260821	O-ring	1
6	AR2500550	Split pin	1	45	AR3740050	Ring	1
7	AR1980220	Wobble plate	2	46	AR600180	O-ring	1
8	AR2760410	Spring	1	47	AR3740040	Fitting	1
9	AR2760400	Piston	1	48	AR2022201	Fork	1
10	AR2260100	O-ring	1	49	AR2029752	TSS box assembly	1
11	AR660190	O-ring	1	50	AR2029752A	Micro switch	1
12	AR2760210	Ring	1				
13	AR2760570	Guide	1				
14	AR1200690	O-ring	1				
15	AR394280	O-ring	5				
16	AR2260070	Shutter	1				
17	AR2760980	Seat	1				
18	AR770140	O-ring	1				
19	AR2760640	Ring	1				
20	AR390080	O-ring	2				
21	AR1540272	Screw	1				
22	AR1982520	Hose tail	1				
23	AR480480	O-ring	1				
24	AR1250280	Ball	1				
25	AR1560520	Spring	1				
26	AR2260190	O-ring	1				
27	AR3740010	Valve body	1				
28	AR1120681	O-ring	1				
29	AR1540630	O-ring	1				
30	AR3740020	Body	1				
31	AR880270	O-ring	1				
32	AR2260420	Screw	1				
33	AR2101770	O-ring	1				
34	AR2760131	Shutter	1				
35	AR2760200	Spring	1				
36	AR2760120	Insert	1				
37	AR1470210	O-ring	1				
38	AR2760270	O-ring	1				
39	AR2760230	Injector	1				

F= Kit42780 O-Rings					
Pos	Qty	Pos	Qty	Pos	Qty
10	1	23	2	38	1
11	1	26	1	44	1
14	1	28	1	45	1
15	5	29	1	46	1
18	1	31	1		
19	1	33	1		
20	2	37	1		

ARKIT 2223 VRZ Auto Repair Kit			
Pos	Qty	Pos	Qty
28	1	44	1
40	1	45	1
41	1	46	1
42	1	47	1
43	1	50	1

## Storm 2 32 amp Contactor with 32 amp MCB

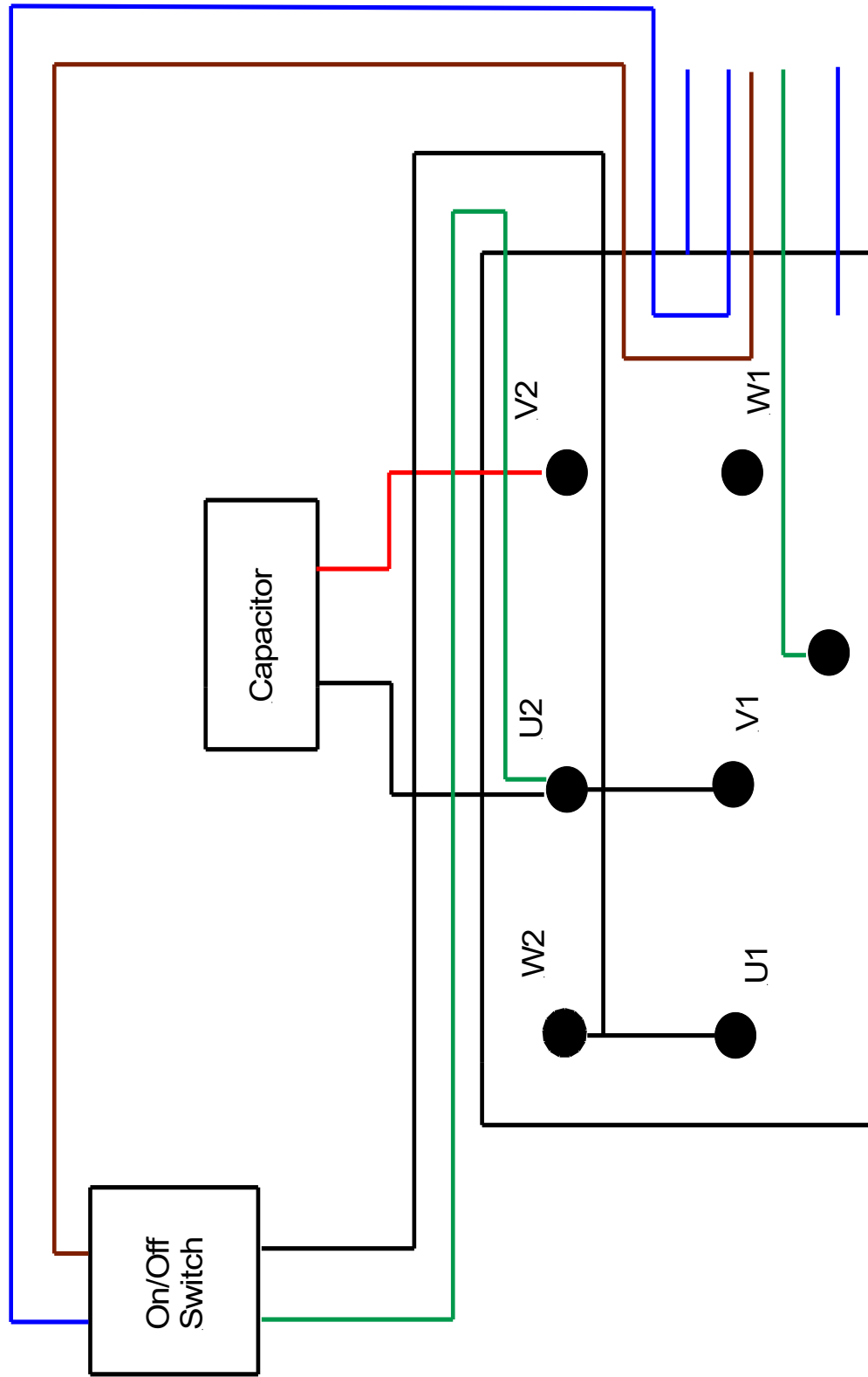


Part Numbers:

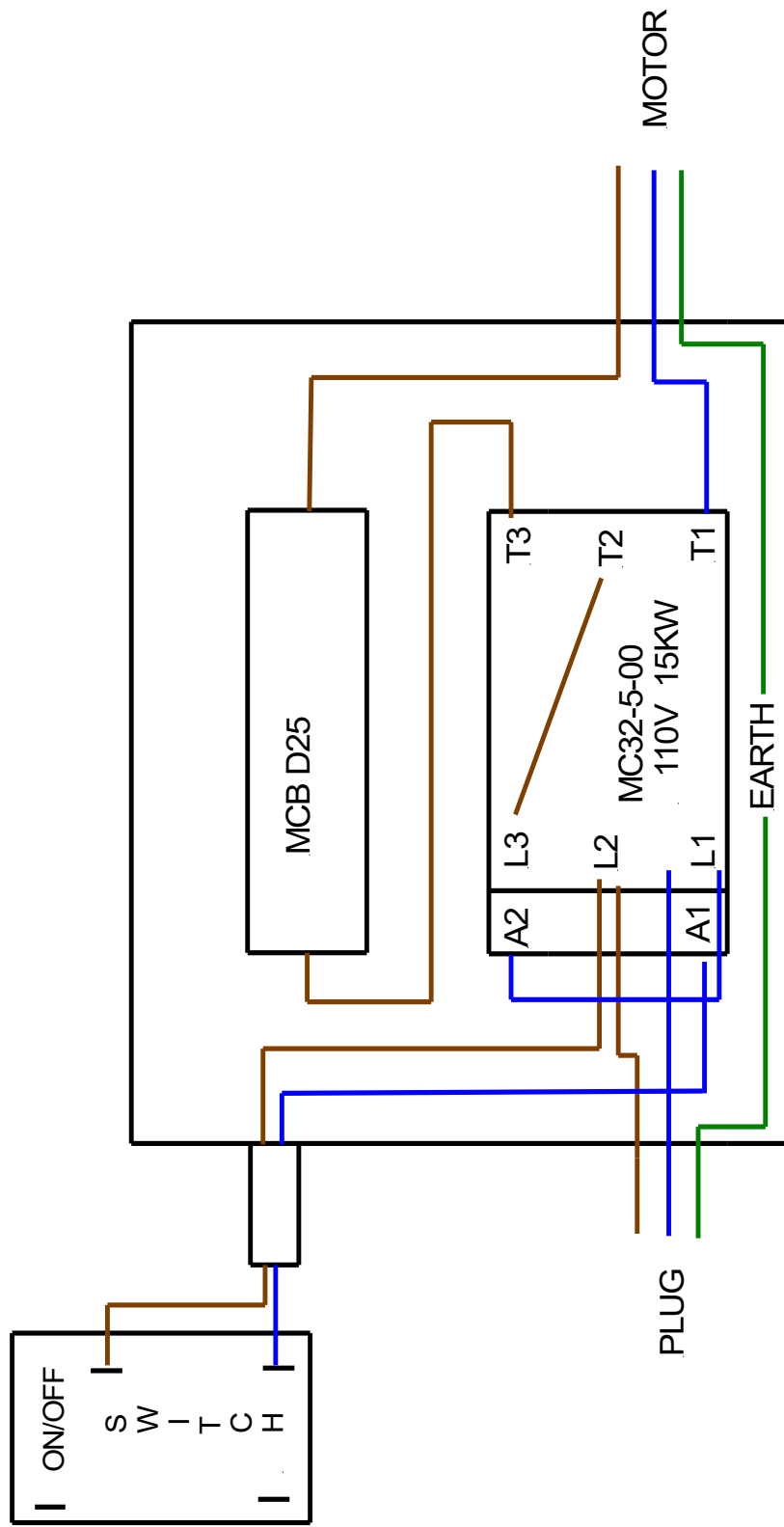
DEM10111—Contactor 110V 32 Amp

DEM101251—32 Amp MCB Circuit

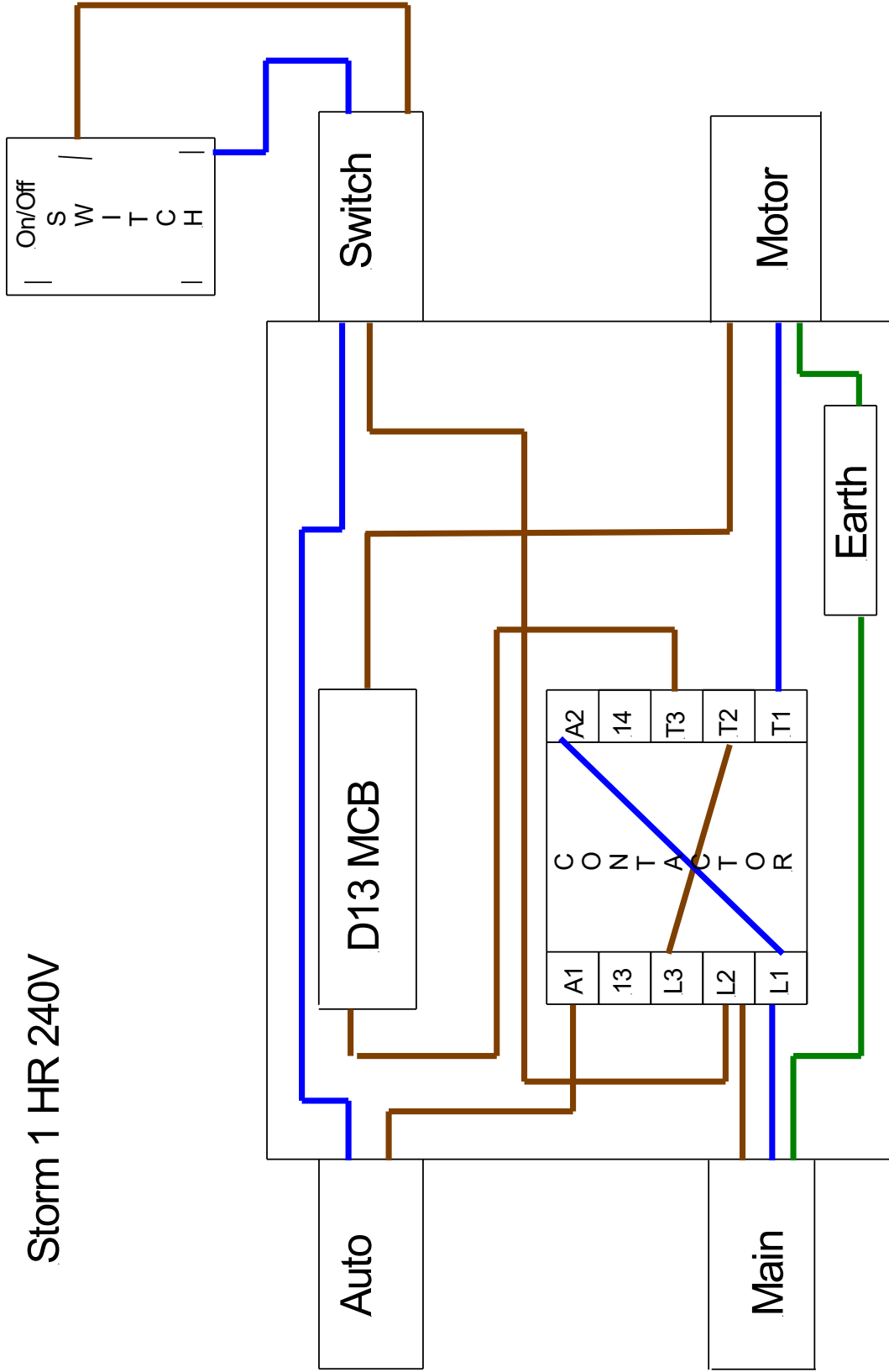
Storm 240V



# Storm 2 110V

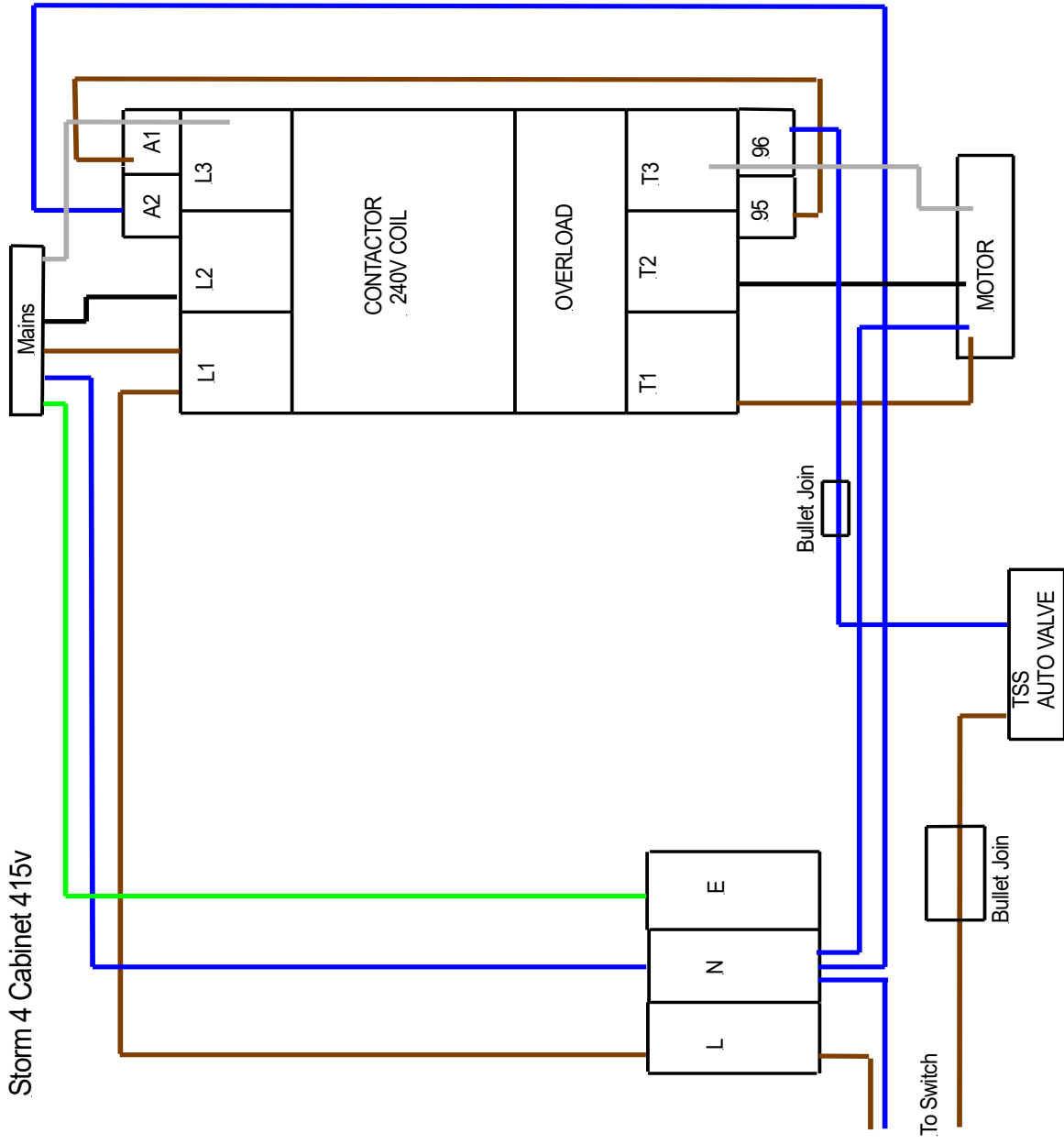


# Storm 1 HR 240V





Storm 4 Cabinet 415v

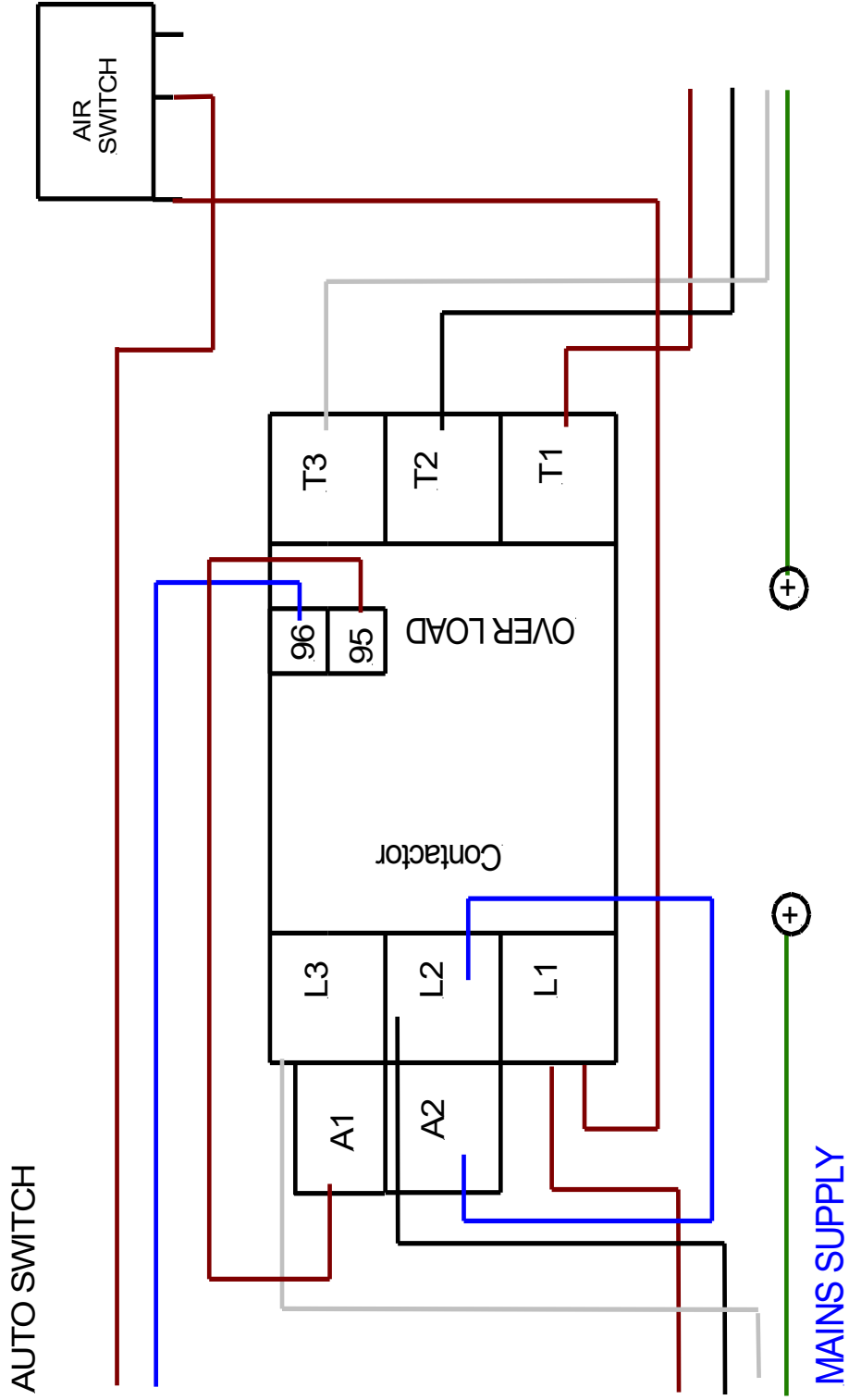


See Storm cabinet switch diagram for wiring of switches.  
 The low water tank sensor wiring is in series with the TSS.  
 TSS & sensor blue joined.  
 Brown on TSS to 96.  
 Brown on low water sensor to switch.

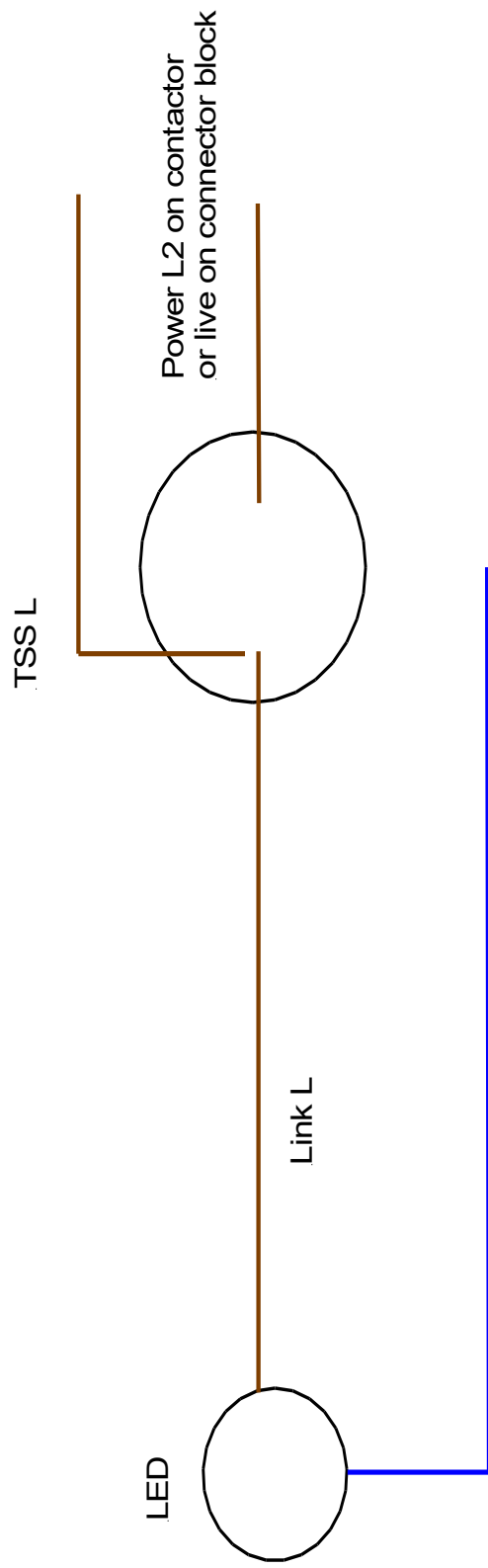
KTW 12/3/13

Storm 4 and Wall Mounted 415v

KW 24/06/11

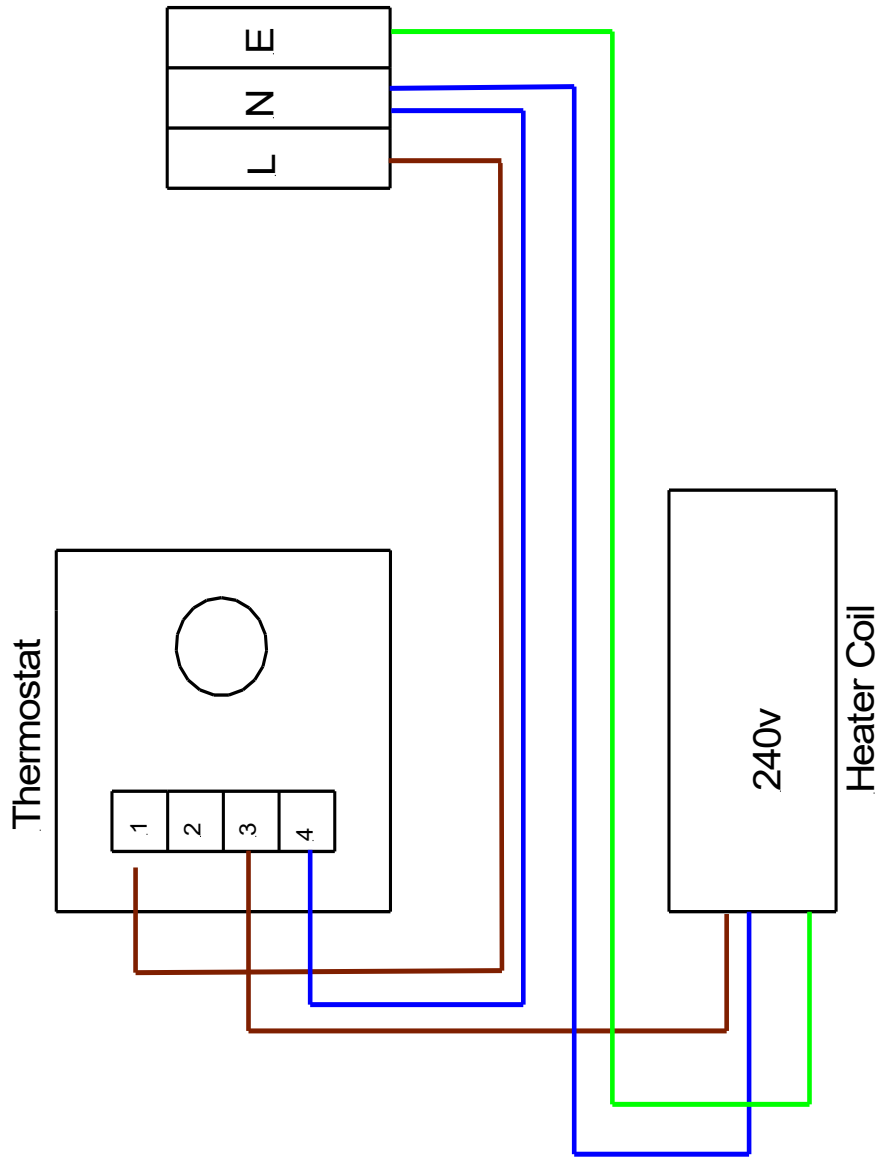


# Storm Cabinet Switches



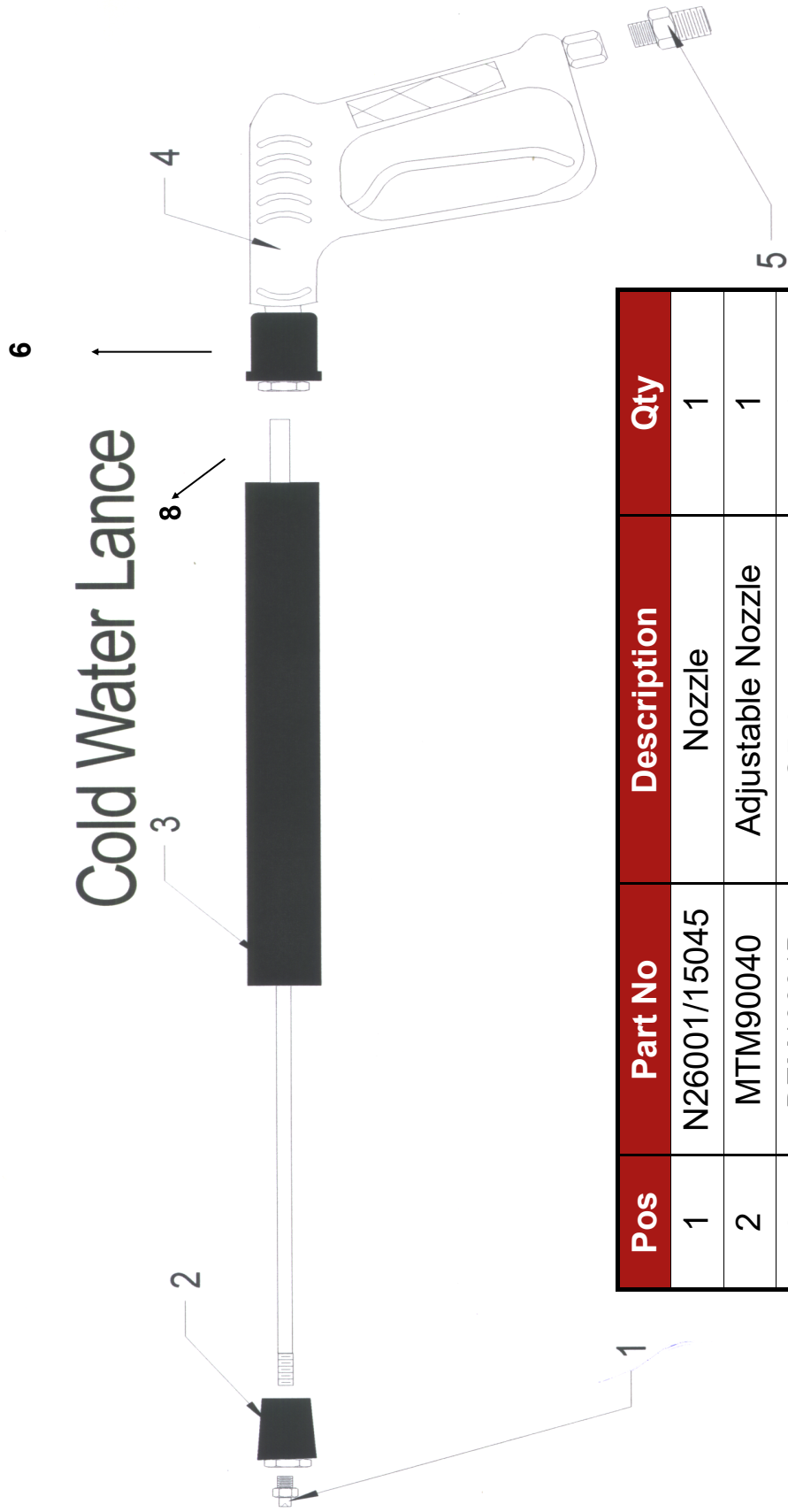
KTW 12/3/13

Frost Stat & Heater Coil (all cabinets)



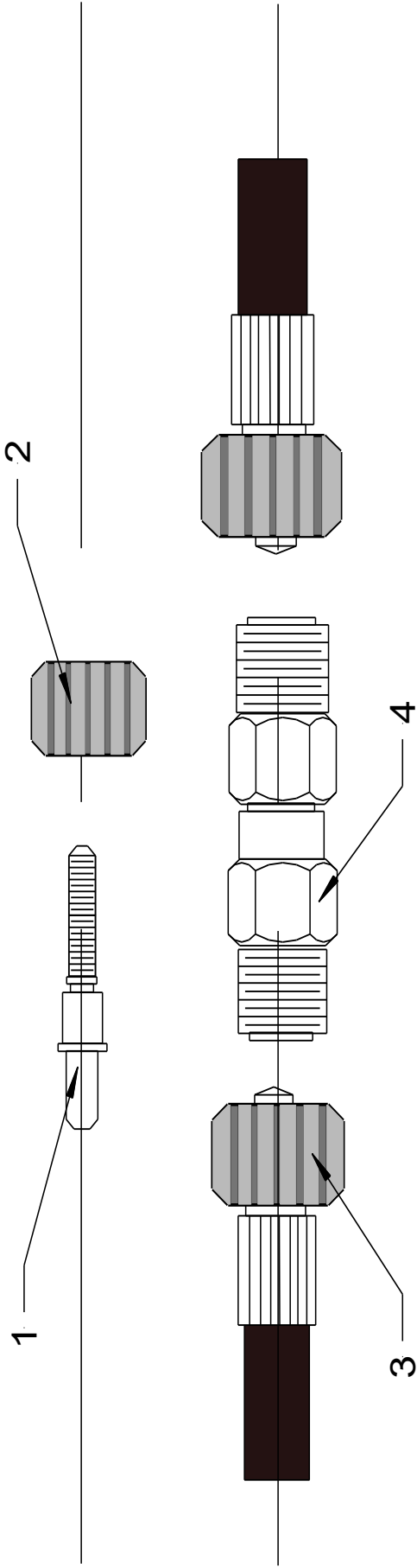
KTW 12/3/13

# Cold Water Lance



Pos	Part No	Description	Qty
1	N26001/15045	Nozzle	1
2	MTM90040	Adjustable Nozzle	1
3	DEM10031B	QR Lance	1
4	DEM10030	QR Trigger	1
5	MTM70012	MVG Coupling	1

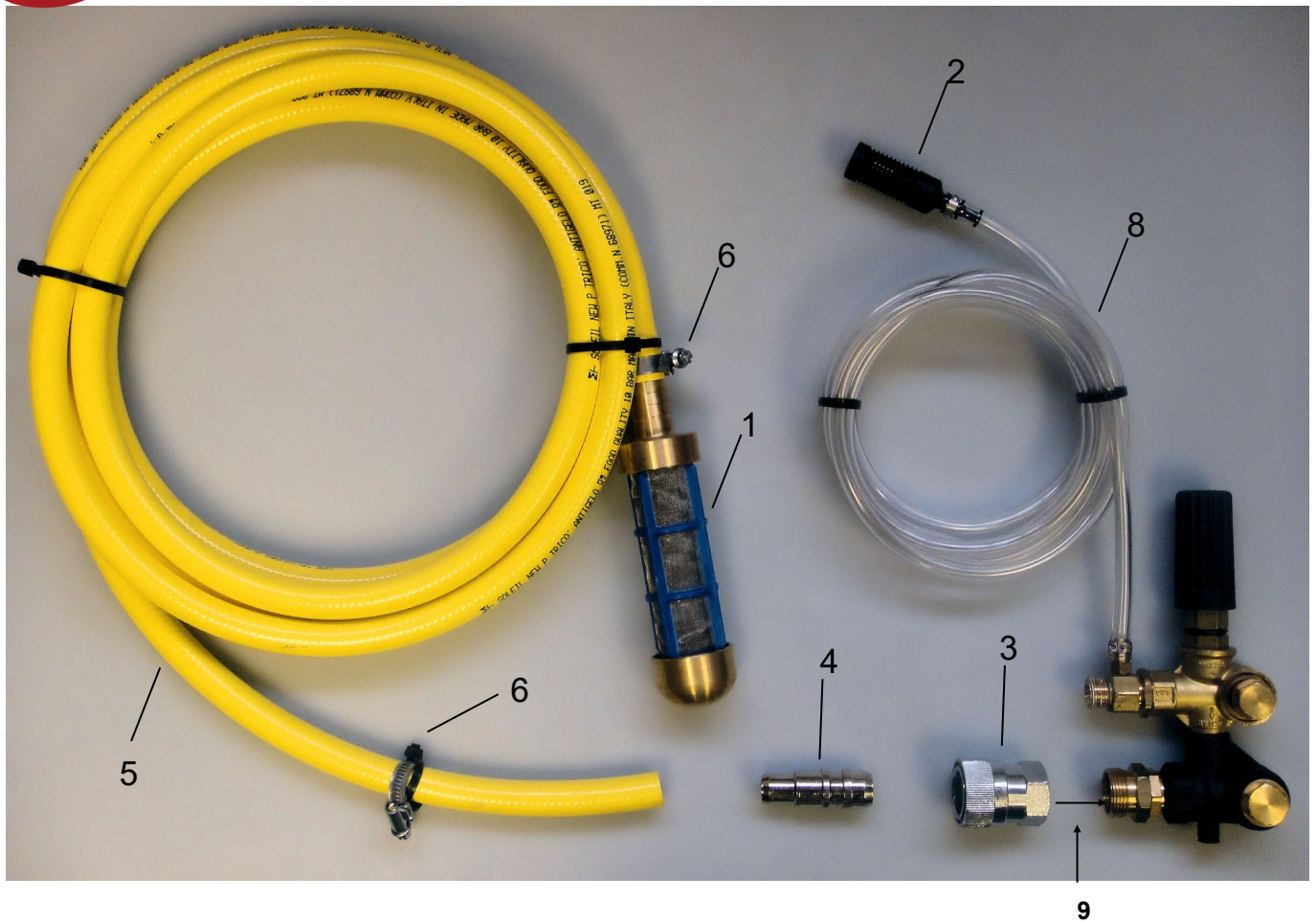
# High Pressure Hoses



1.	Hose Insert	MV00490 (items 1 & 2)
2.	Nut	
3.	High Pressure Hose	HH00030MVG
4.	Hose Joiner	MV00500
<b>Alternative Hose Lengths</b>		
	15 Metre	HH00050MVG
	30 Metre	HH00100MVG



# Storm Inlet Fitting



Position	Part No	Description	Qty
1	DEM10041	100 Mesh Suction Filter	
2	MTM86010	Chemical Filter	
3	MTM73001	QR Nipple Female	
4	MTM73020	QR Nipple Male	
5	HH0053	Yellow Hose	
6	DEM20500	Jubilee Clip	
7	DEM10042 INC (1-4-5-6)	Suction filter with Hose and fittings	
8	DEM10115	Detergent Pipe (Chemical Pipe)	3mtr
9	MTM73K991	Plastic washer for N0 3	

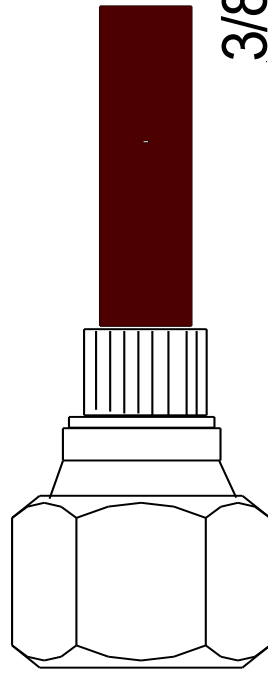
# Storm Wall Mounted Internal Hose

KTW 25/6/09

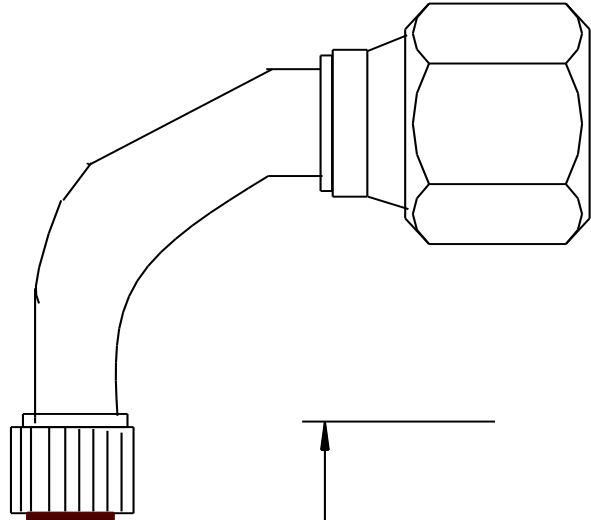
Pump head to gauge and Unloader valve to outlet

HH0010

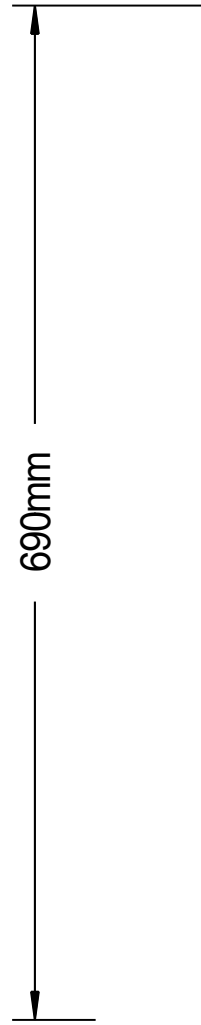
## 3/8" BSP 90° Straight



## 3/8" BSP 90°



## 3/8" R1T Hose



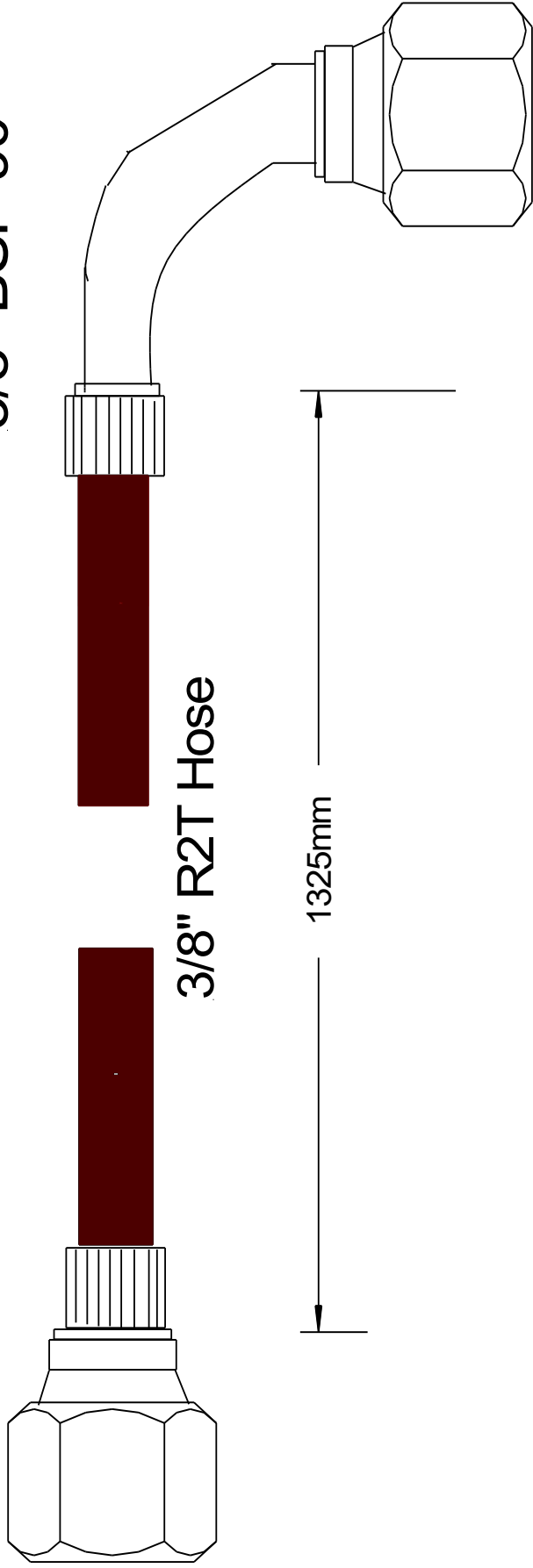
**Storm Wall Mounted 415v  
Pump to pressure gauge**

KTW 29/6/09

HH00101

**3/8" BSP 90° Straight**

**3/8" BSP 90°**



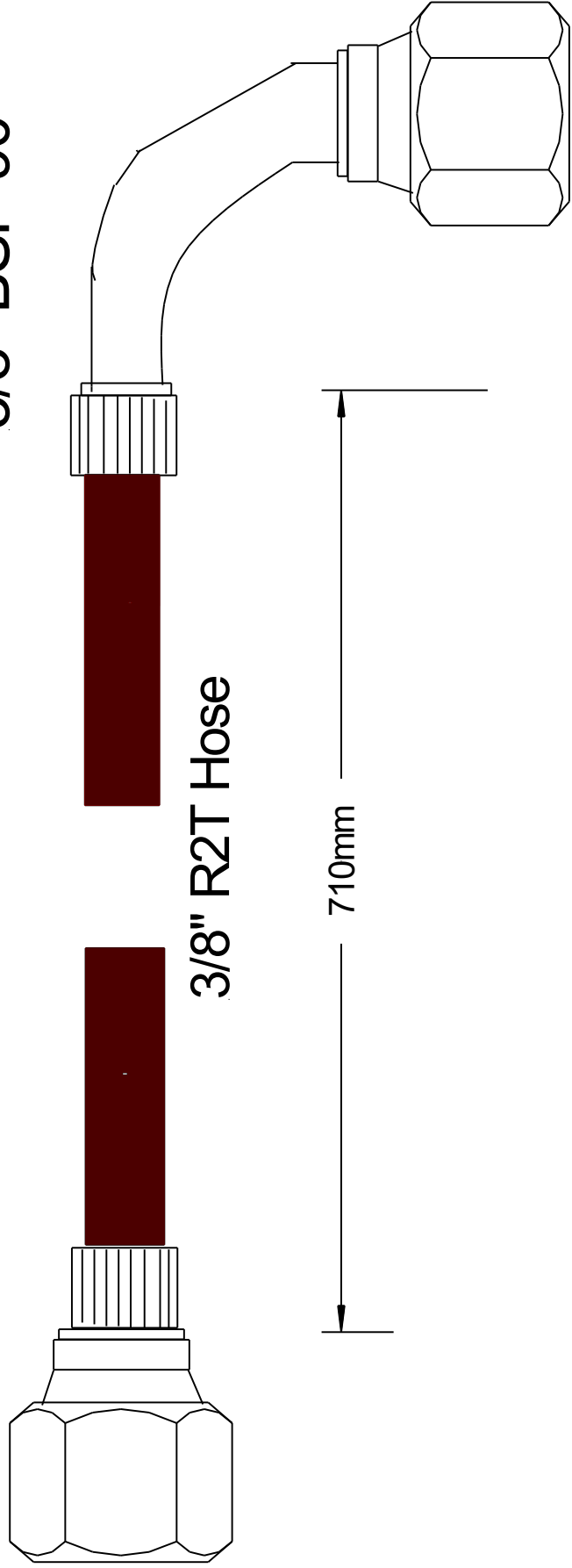
Wall Mounted 415v Storm  
Unloader valve to outlet

HH00102

KTW 29/6/09

3/8" BSP 90° Straight

3/8" BSP 90°





# Warranty

**This warranty covers the cost of all replacement parts and labour charges incurred. It does not cover the cost of transport or carriage. It is the owners responsibility to return the machine to a service depot or pay the travelling expenses of a service engineer to attend. Demon International's decision in warranty matters is final and binding.**

**Demon International Ltd undertake to repair or replace, any component which may fail due to a manufacturing fault within a period of 12 months from the date of purchase, provided that any fault or damage was not sustained by;**

**Parts which may or may not wear out during the first year and which are considered**

**service items which will need replacing from time to time: High pressure nozzle, lance, trigger, hoses, fuel nozzle, fuel filter, piston seals, valves, unloader seats and seals, water filter, non-return valve, chemical barbs, chemical pipes and pump oil seals.**

**It is the owners responsibility to ensure the Pressure Washer is kept in a safe and suitable environment and any faults reported by operatives to be rectified at the earliest possible date.**

**It is the operators responsibility to check the Pressure Washer for any faults and report them immediately. The Pressure Washer must be used**



# Warranty Procedure

End Users

## **If your machine develops a problem:**

1. Phone Demon for advice with the model and serial number to hand.
2. Describe fully the problem as best you can.
3. If the problem cannot be resolved over the phone then the machine can be booked in for repair and if the faults are covered by the warranty the repair will be carried out free of charge.
4. If you cannot bring the machine in for repair then we will despatch an engineer. If the fault is covered by the warranty then we will not charge for labour or spares used, however the transport charge will be payable whether or not the repair is warranty.

Hire Centres and Dealers

## **If your machine develops a problem:**

1. Phone Demon for advice with the model and serial number to hand.
2. Describe fully the problem.
3. We will advise you on the best course of action, however if parts are required you must raise a purchase order number to cover the parts. When the parts are fitted they must be returned for examination before a credit note is issued.
4. If you are unable to repair the machine then we will despatch an engineer to carry out the repair. We will need a purchase order to cover the cost of transport to and from the site and for parts and labour if the repair is not covered under the warranty.
5. If required Demon will arrange for a carrier to collect a damaged machine, if the warranty claim is valid we will pay this cost, if not it will be charged to the customer.

For parts warranty ring Demon and request a warranty claim form faxed to you. This form must accompany any returned parts.



# CE Conformity Declaration

We **Demon International Ltd**

Of **Abbots Close, Lee Mill Industrial Estate, Ivybridge, Devon PL21 9GA**

Declare that:

**Equipment** **High Pressure Water Jet Machines**

**Model name/number**

**Serial number**

Conforms to the relevant safety and health related requirements of the appropriate EC Directives. This declaration shall cease to be valid if modifications are made to the machine without our approval.

In accordance with the following EU Directives:

- 73/23/EEC**                    **The Low Voltage Directive – and its amending directives**
- 89/336/EEC**                **The Electromagnetic Compatibility Directive – and its amending directives**
- 98/37/EEC**                 **The Machinery Directive – and its amending directives**
- 2000/14/EC**                **Noise Directive**

Harmonised Standards Applied:

**EN 292-1 & EN292-2 (now ISO:12100), EN 60335-2-79, EN55014-1, EN55014-2, EN 61000-3-2**

Applied national standards and technical specifications:

**DS EN 60335-2-79**

Applied conformity evaluation method

**Appendix V**

Sound power level dB(A):

	<b>Storm 1</b>	<b>Storm 2</b>	<b>Storm WM1</b>	<b>Storm 4 &amp;WM4</b>	<b>Storm Twin Cabinet 1</b>	<b>Storm Twin Cabinet 4</b>
<b>Measured</b>	<b>80</b>	<b>75</b>	<b>80</b>	<b>84</b>	<b>80</b>	<b>84</b>
<b>Guaranteed</b>	<b>81</b>	<b>76</b>	<b>81</b>	<b>85</b>	<b>81</b>	<b>85</b>

**HAV – All triggers and lances have vibration levels below 2.5 m/s/s<sup>2</sup>**

I hereby declare that the equipment named above has been designed to comply with the relevant sections of the above referenced specifications. The unit complies with all essential requirements of the Directives.

Signed:  **Martyn Walke** Authority: *Technical Director*

Date:



# CA Declaration of Conformity

We **Demon International Ltd**

Of **Abbots Close, Lee Mill Industrial Estate, Ivybridge, Devon PL21 9GA**

Declare that:

**Equipment: Industrial Pressure Washer**

**Model name/number:**

**Serial number:**

**Conforms to the relevant safety and health related requirements of the appropriate UK Legislation. This declaration shall cease to be valid if modifications are made to the machine without our approval.**

**In accordance with the following UK Legislation:**

**The Electrical Equipment (Safety) Regulations 2016 – and its amended directives**

**Electromagnetic Compatibility Regulations 2016 – and its amended directives**

**Supply of Machinery (Safety) Regulations 2008 – and its amended directives**

**Noise Emission in the Environment by Equipment for use Outdoors Regulations 2001 – and its amended directives**

**Harmonised Standards Applied:**

**British Standards Institution (BSI)**

**Sound power level dB(A):**

**HAV –**

**All triggers and lances have vibration levels below 2.5 m/s/s<sup>2</sup>**

I hereby declare that the equipment named above has been designed to comply with the relevant sections of the above referenced specifications. The unit complies with all essential requirements of the UK Legislation.

	<b>Storm 1</b>	<b>Storm 2</b>	<b>Storm WM1</b>	<b>Storm 4 &amp; WM4</b>	<b>Storm Twin Cabinet 1</b>	<b>Storm Twin Cabinet 4</b>
<b>Measured</b>	<b>80</b>	<b>75</b>	<b>80</b>	<b>84</b>	<b>80</b>	<b>84</b>
<b>Guaranteed</b>	<b>81</b>	<b>76</b>	<b>81</b>	<b>85</b>	<b>81</b>	<b>85</b>

**Signed:** 

**Authority:** *Technical Director*

**Date:**